

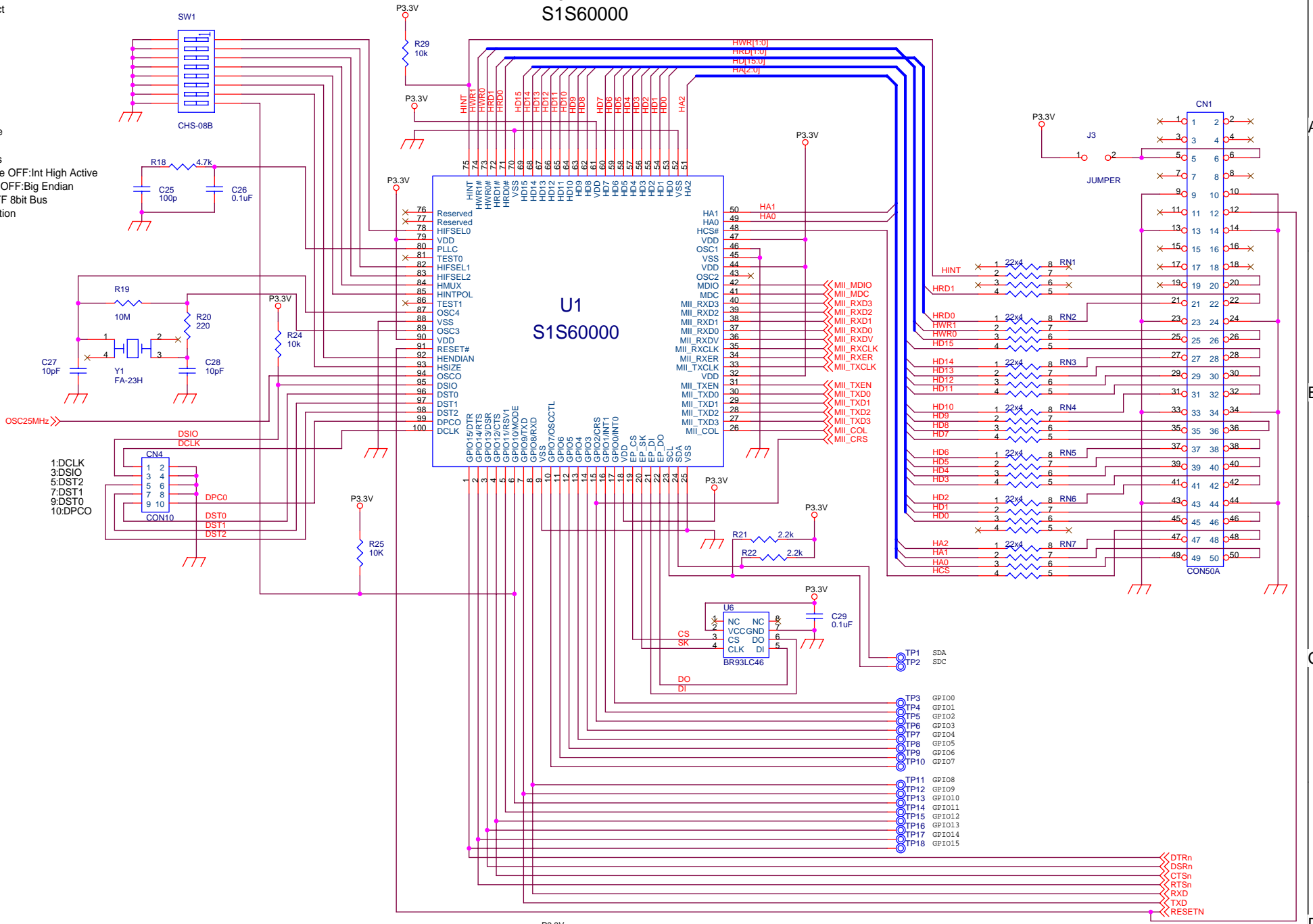
1-3 Host Type Select

[3:1] type

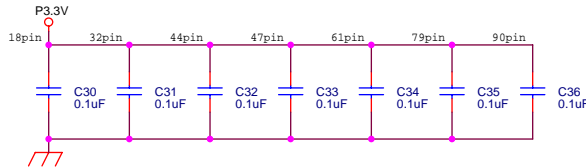
- 000 SH3/4
- 001 x68k Type1
- 010 x68k Type2
- 011 Generic
- 100 Reserved
- 101 MIPS/ISA
- 110 PCMCIA
- 111 EEPROM Use

(ON = 0, OFF = 1)

- 4 ON: Multiplex Bus
- 5 ON: Int Low Active OFF: Int High Active
- 6 ON: Little Endian OFF: Big Endian
- 7 ON: 16bit Bus OFF 8bit Bus
- 8 ON: Serial Emulation

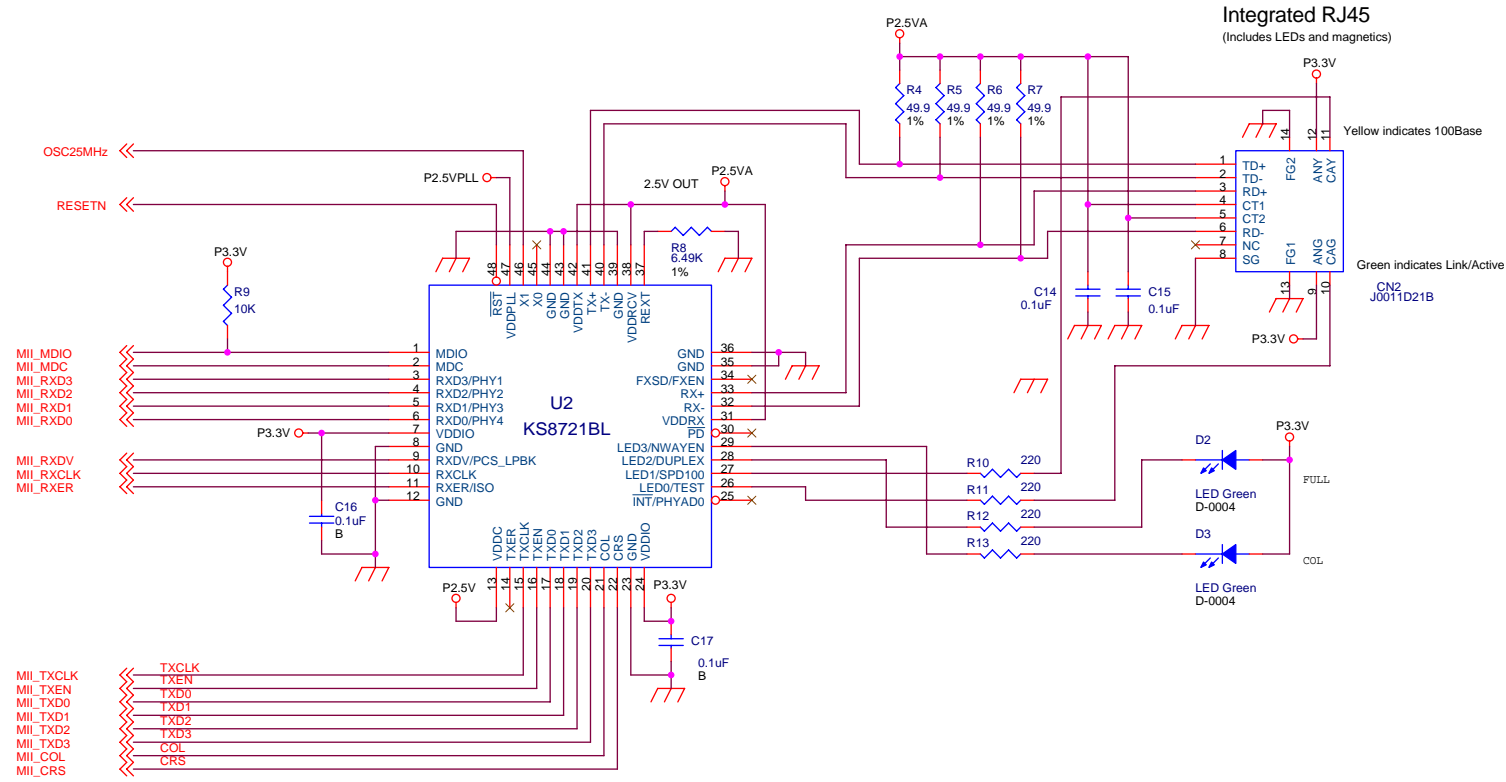


- 1: DCLK
- 3: DSI/O
- 5: DST2
- 7: DST1
- 9: DST0
- 10: DPC0

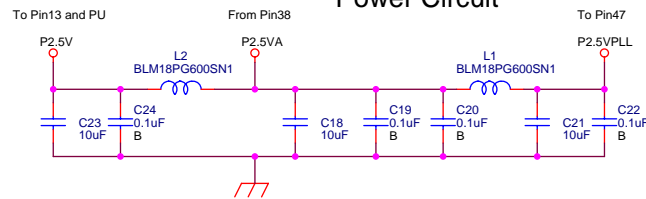


Title		
S1S60000 Evaluation Board		
Size	Document Number	Rev
A3	SSU1S60K	A
Date:	Tuesday, April 17, 2007	Sheet 1 of 3

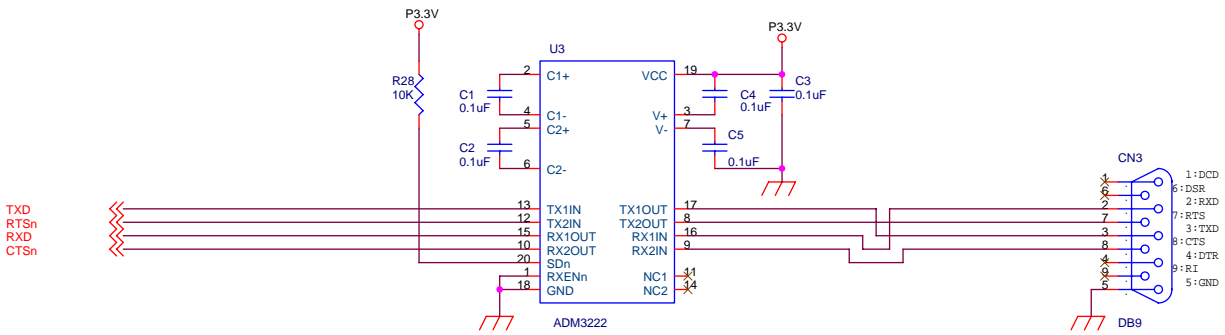
Ethernet PHY



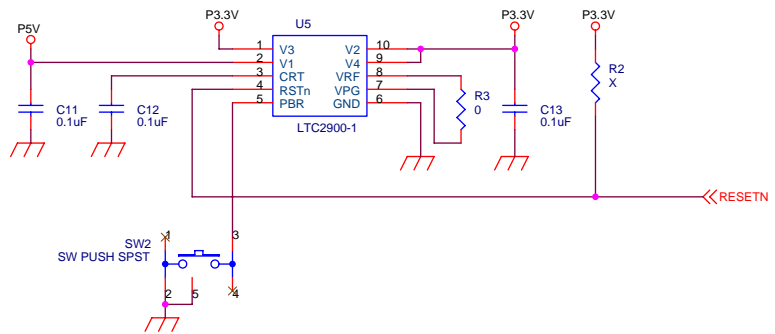
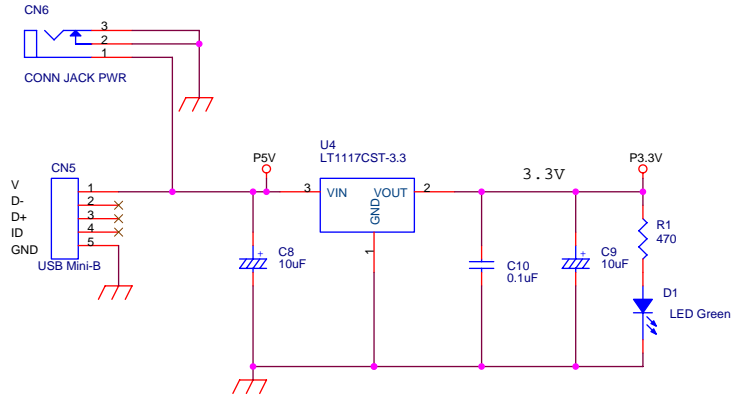
Power Circuit



Title		
S1S60000 Evaluation Board		
Size	Document Number	Rev
A3	SSU1S60K	A
Date:	Tuesday, April 17, 2007	Sheet 2 of 3



POWER Circuit



Title		
S1S60000 Evaluation Board		
Size	Document Number	Rev
A3	SSU1S60K	A
Date:	Tuesday, April 17, 2007	Sheet 3 of 3