

# [Problems] View Configuration

When Program and Data exit out of ROM, [Console] view display below error and “Build” is stopped.

Error: ProjectName.sa contains data outside of specified range (8000:4000)

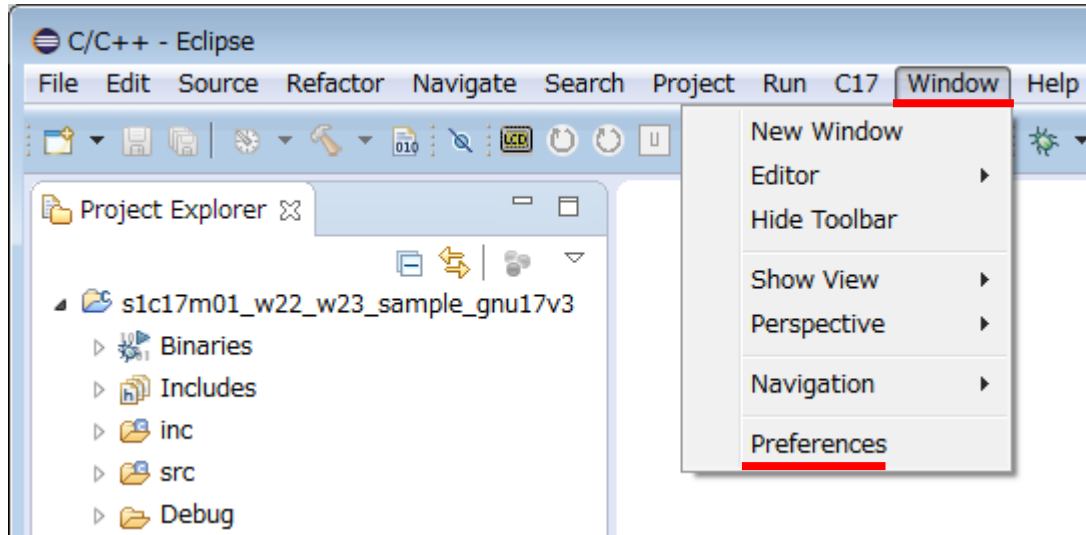
These errors which Epson’s tools generate are not reflected in [Problems] view.

For reflecting errors, please set these settings.

# [Problems] View Configuration

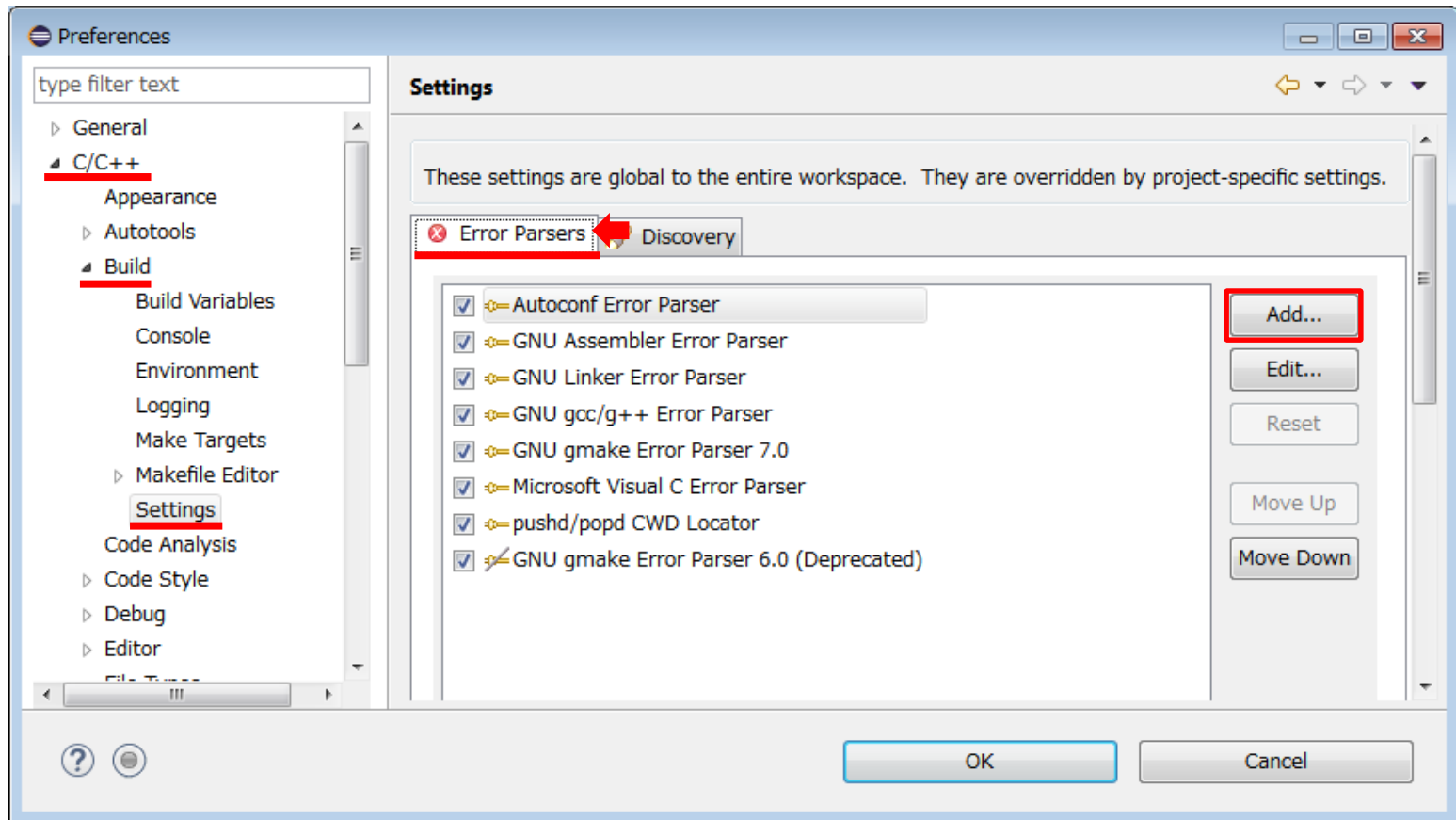
## 1. Making definition

- a. Please select [Window] > [Preference]



# [Problems] View Configuration

- b. Please select [C/C++] > [Build] > [Settings] > [Error Parsers], and push [Add] button.



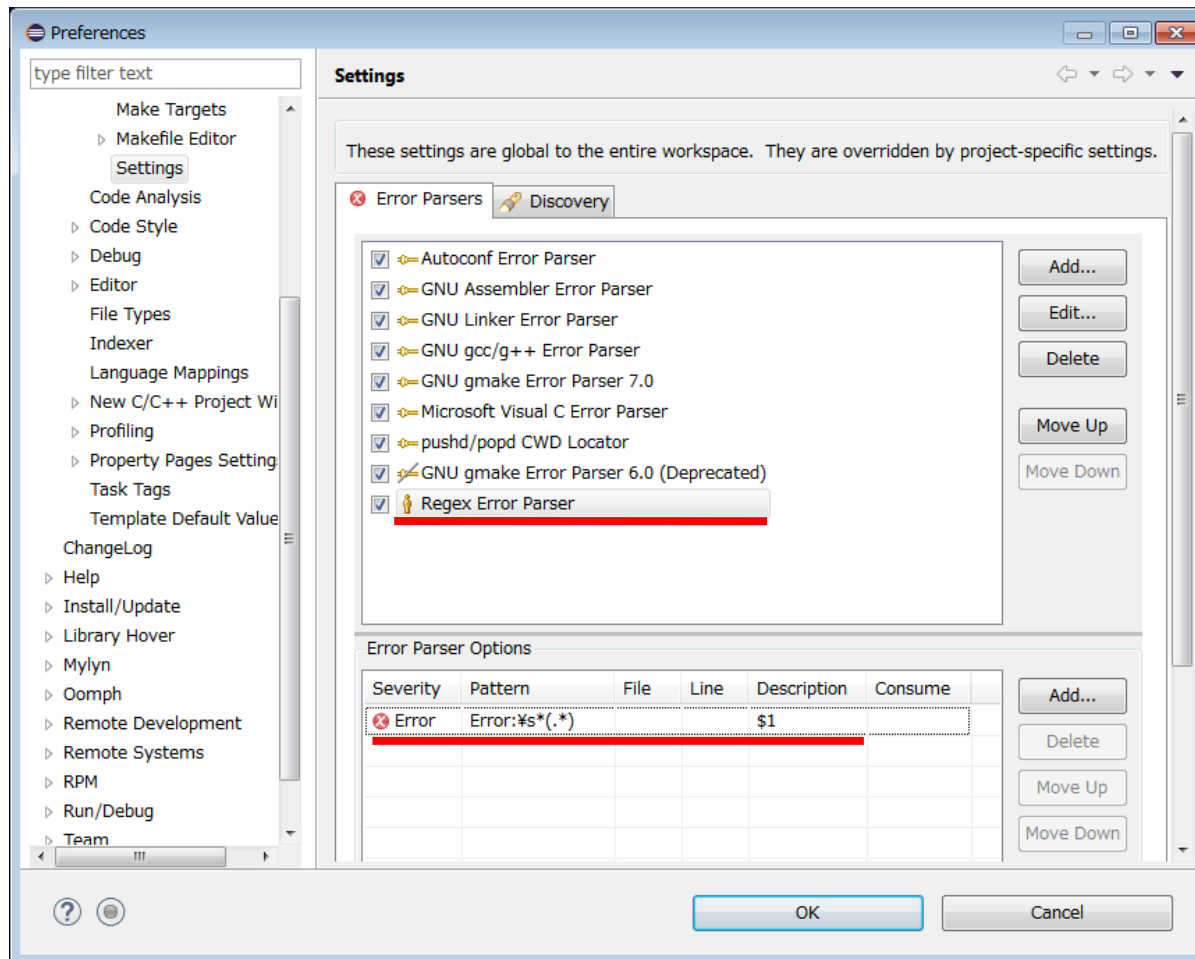
# [Problems] View Configuration

c. Please input below words in Regex Error Parser

Severity: Error

Pattern: Error:¥s\*(.\*)

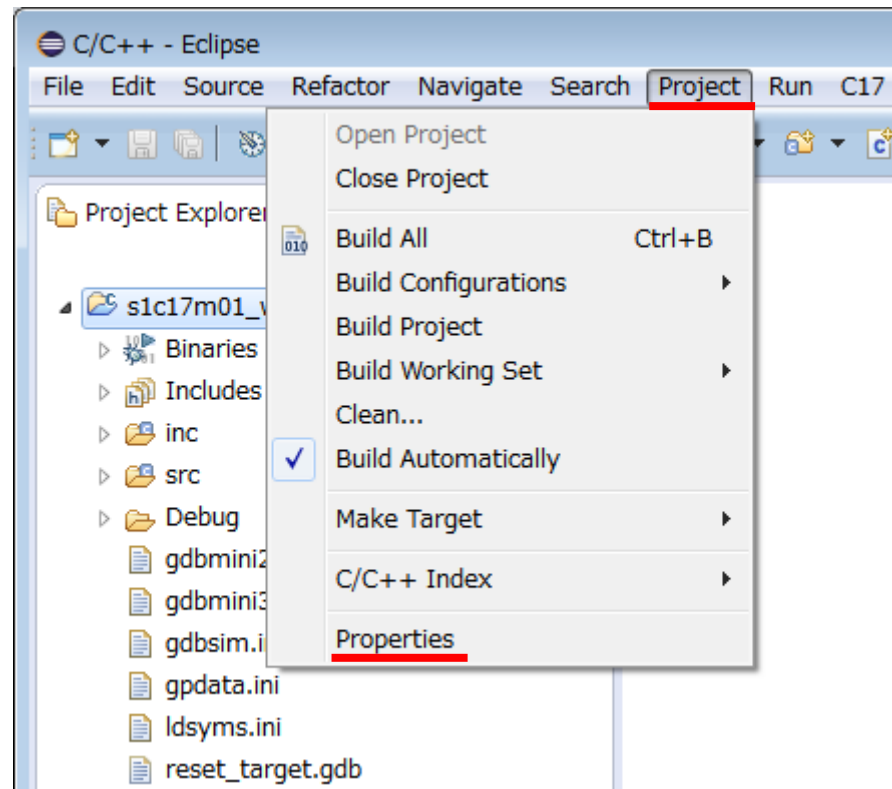
Description: \$1



# [Problems] View Configuration

## 2. Activation of definition

- a. Please select [Project] > [Properties]



# [Problems] View Configuration

- b. Please select [C/C++ Build] > [Settings] > [Error Parsers]
- c. Please check a box of [Regex Error Parser] and push [OK] button.

